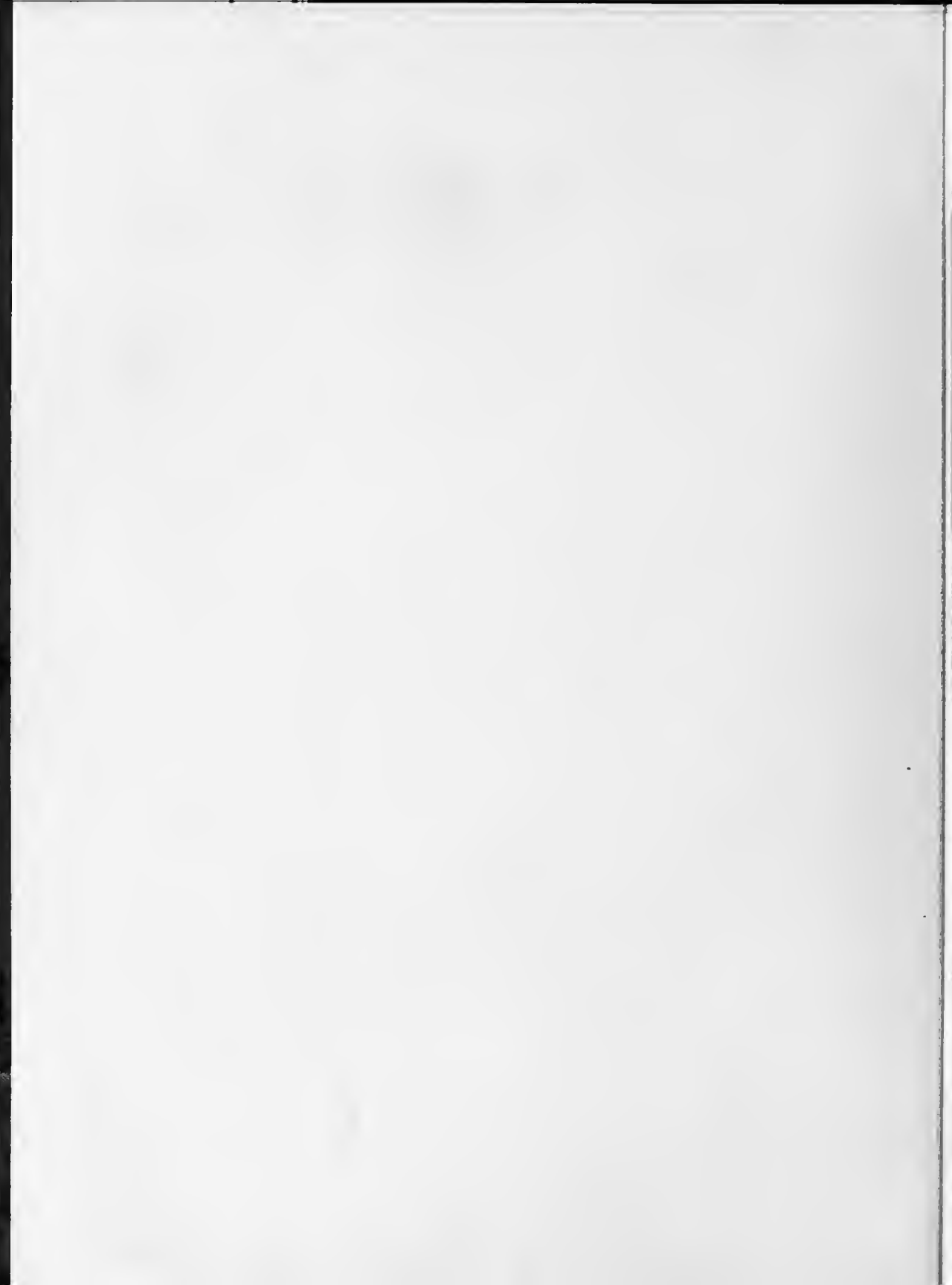


Contributed to U.N.C. library
by James M. Haeffz

The Class of 1940 Presents





The 1940 Summit

SADIE JUNE LOVE

WILMA KYLES

CO-EDITORS

BUSINESS MANAGER

HAROLD KEITH

BILTMORE COLLEGE
ASHEVILLE, NORTH CAROLINA





To Miss Virginia Bryan

To Miss Virginia Bryan, Dean of Women and our un-
failing friend, who is always devoted to our happiness
and progress, we sincerely dedicate the 1940 edition of
THE SUMMIT.



Board of Trustees

The Asheville City School Board, whose members constitute also the Board of Trustees of Biltmore College:

W. M. Smathers, Chairman; Frank J. Austin, W. Randall Harris, Mrs. T. Allen Luther, E. B. Roberts.

In Appreciation

The editors of the SUMMIT desire to express the thanks of the students of Biltmore College to the following friends of the institution, whose pictures they have unfortunately not been able to include:

Superintendent R. H. Latham, under whose general supervision the College is operated; S. M. Connor, business manager of the city schools and of the College; P. M. Burdette, Asheville city manager; and the members of the city council; which makes an annual appropriation for the College: Holmes Bryson Mayor; L. Lyons Lee, Vice Mayor; Carl R. Bamford, Eugene Carland, Howard G. Etheridge, J. E. Divelbiss, Jr., O. E. Starnes.



Biltmore College Faculty

C. A. Lloyd

M.A., B.A., VANDERBILT UNIVERSITY
DEAN

MAY CARTER BLACKSTOCK

Mathematics
M. A., Brown University; B. A.,
Meredith College.

VIRGINIA BRYAN

Dean of Girls, English
M. A., Columbia University; B. A.,
Erskine College.

ELLEN DEPPE CALLAHAN

Dramatics
B. A., University of North Carolina;
Theodora Irvine Studio of the Theatre.

WILLIAM B. LOGAN

Engineering Drawing
B. A., Furman University; Wash-
ington School of Fine and Applied
Arts.

E. RAY MANN

Mathematics, Physics
Ph. D., Cornell University; M. A.,
B. A., University of North Carolina.

W. ERNEST MERRILL

Biology, Chemistry
M. S., Tulane University; B. S.,
Furman University.

FRANK HOWARD RICHARDSON

Hygiene
M. D., B. A., Cornell University;
F. A. C. P.; Zeugnis from Medical
College of the University of Vienna.

EDITH THOMAS STANFORD

French
Graduate of College de Jeunes
Filles, La Rochelle, France.

J. J. STEVENSON

History, Government, Bible
M. A., B. A., University of South
Carolina; B. D., Emory University.

FRANCIS S. WILDER

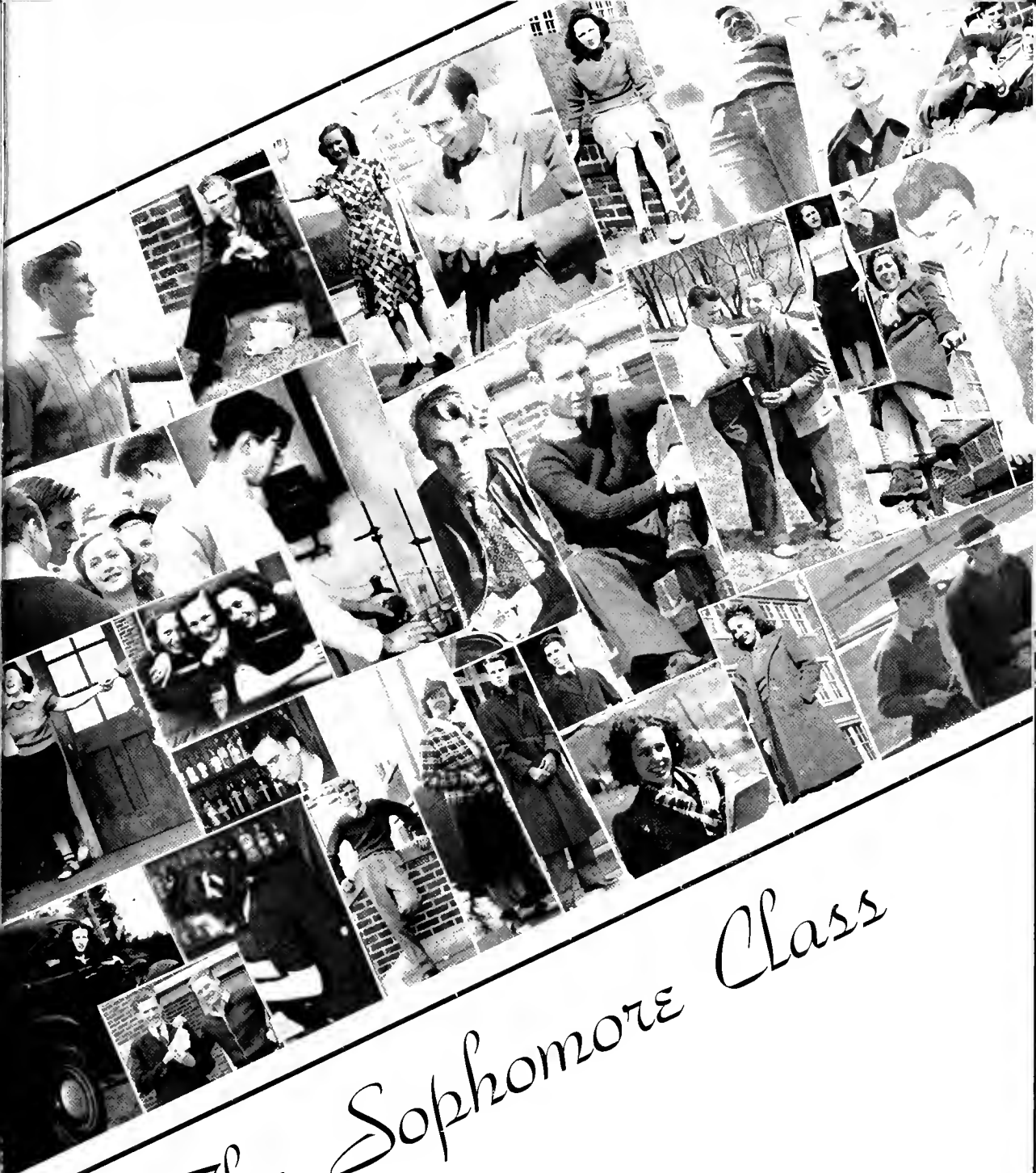
Economics, Sociology, Psychology
Ph. D., M. A., University of North
Carolina; B. A., Dartmouth College.

NO PICTURE AVAILABLE

FRANK GOUGH

Voice and Glee Club
Attended University of North Caro-
lina; Peabody Conservatory, Balti-
more; Curtis Institute, Philadelphia;
Pupil of Pietro Mimetti, Pasquale
Amator, Emilio De Gogorza.





The Sophomore Class



IN MEMORY

of Allen Luther, our beloved friend and comrade,
whose untimely death on January 28, 1940,
brought to us much sorrow.

"The light he leaves behind him lies
Upon the paths of men."



Sophomore Officers

JAMES HALL
President

HAROLD KEITH
Vice-President

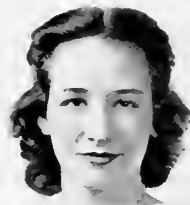
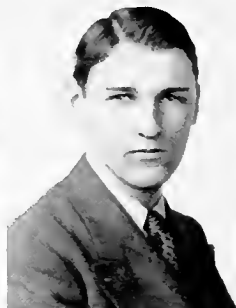
GEORGE DURNER
Secretary, Treasurer

Sam, our Janitor
Chauffer

Honor Students

JOE MOTTSMAN
Faculty
Representative

SADIE JUNE LOVE
Student
Representative



PAULINE BALDWIN. Graduate of Billmore High School, 1938; International Relations Club (1); French Club (2); Softball Team (1, 2); Dramatic Club (1).

ALMA LEE CATHEY. Graduate of Valley Springs High School, 1936; International Relations Club (1, 2); Delegate to William and Mary I. R. C. (1); French Club (2); Glee Club (1); Softball Team (2).

ERVIN LINCOLN BALL. Graduate of Lee H. Edwards High School, 1937; International Relations Club (1, 2); Bowling Team (1); Astronomy Club (2).

HELEN COLE. Graduate of Lee H. Edwards High School, 1939; International Relations Club (1, 2); Delegate to William and Mary I. R. C. (1); Glee Club (1, 2); Softball Team (1, 2); Summer Staff (2).

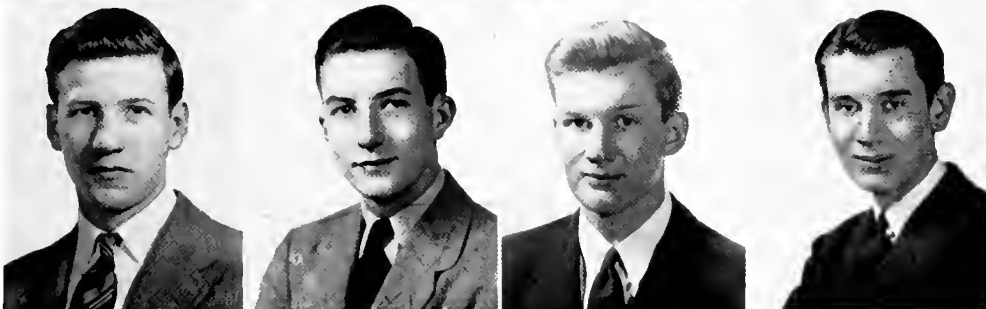
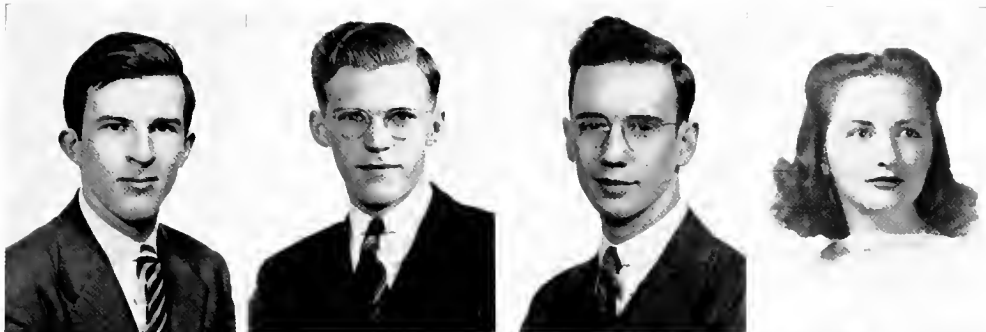
WILLIAM J. BEAKLEY. Graduate of Lee H. Edwards High School, 1937; Dramatic Club (1, 3); International Relations Club (3); Cosmopolitan Atmosphere.

LEO COX. Graduate of Lee H. Edwards High School, 1937.

JUANITA BELL. Graduate of Lee H. Edwards High School, 1938; Dramatic Club (1); International Relations Club (1, 2); French Club (2); Softball Team (1).

DOROTHY DAVENPORT. Graduate of Lee H. Edwards High School, 1938; Glee Club (1, 2); International Relations Club (1, 2); French Club (2); Softball Team (1, 2).





JOE DUNCAN. Graduate of Lee H. Edwards High School, 1938; Basketball Team (1, 2); Captain of Basketball Team (2); Volleyball Team (2); Bowling Team (2).

W. NEAL EVANS. Graduate of Mills River High School, 1938; Dramatic Club (1, 2); Business Manager Dramatic Club (2); International Relations Club (2); Bowling Team (1, 2); Captain Bowling Team (2); Stage Crew (1); "The Showoff."

MARC GALYEAN. Graduate of Valley Springs High School, 1937; Student Assistant in Chemistry (2).

AYLETT GRIFFIN. Graduate of Lee H. Edwards High School, 1937; International Relations Club (1, 2); Glee Club (2); Dramatic Club (1); State Dramatic Contest (1, 2); Cheerleader (2); Bridge Club (1, 2); Sophomore Dance Committee (2); Summit Staff (2); "Sister Mouse"; "Women of Gloucester"; "Honey Chile."

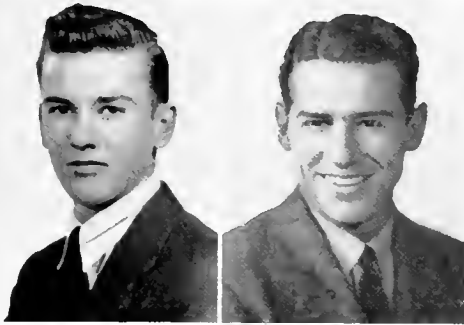
BLACKBURN GROSS. Graduate of Lee H. Edwards High School, 1938; Summit Staff (2); Glee Club (2); Astronomy Club (2); Dance Committee (2); Volley Ball (2); Football Team (1); Tennis Team (2).

BILL HALL. Graduate of Lee H. Edwards High School, 1938.

JAMES M. HALL JR. Graduate of Lee H. Edwards High School, 1937; President of Class (1); Chief Marshal at Commencement (1); President of Class (2).

HARRY HITES. Graduate of Lee H. Edwards High School, 1938.





WILLIAM H. JOHNSON, JR. Graduate of Lee H. Edwards High School, 1938; Freshman Marshal; Astronomy Club (2); Sophomore Dance Committee (2).

HAROLD KEITH. Graduate of Lee H. Edwards High School, 1938; International Relations Club (1); Cheerleader (2); Bridge Club (1); French Club (2); Business manager of Summit (2); Vice-President of Class (2); State Dramatic Contest (1, 2); "Inn of Return"; "Antic Spring"; "Game of Chess"; "Honey Curls."

WILMA KYLES. Graduate of Grace High School, 1938; Dramatic Club (1); International Relations Club (1); Summit Staff (1); Co-Editor Summit (2); Student Assistant in Biology (2); State Dramatic Contest (1); "Sister Mouse."

MAURINE LADY. Graduate of Eddyville High School, Eddyville, Ky., 1938; International Relations Club (1, 2); Secretary of Hygiene Class (2); Softball Team (1); Committee for International Relations Club (2).

SADIE JUNE LOVE. Graduate of Lee H. Edwards High School, 1938; Co-Editor Summit (2); Summit Staff (1); Blues Staff (2); Secretary of Class (1); Glee Club (2); Dramatic Club (1); Vice-President; International Relations Club (2); Freshman Marshal; Student Assistant in English (2); President; Bridge Club (2); Bridge Club (1, 2); "Women of Gloucester"; "Inn of Return"; "Sister Mousse"; "Antic Spring."

JOE MOTTSMAN. Graduate of Hendersonville High School, 1938; International Relations Club (1); Marshal at Commencement (1).

FRANCES NELSON. Graduate of Lee H. Edwards High School, 1938; International Relations Club (1, 2); Softball Team (1, 2).

ERNEST T. PATTON. Graduate of Lee H. Edwards High School, 1938; Astronomy Club (2).





DIXON RICHARDSON. Graduate of Asheville Farm School, 1938; Editor of Bluets (2); Freshman Marshal (1); Tennis Team (2); International Relations Club (1, 2); Secretary I. R. C. (2); French Club (2); Photographic Editor of Summit (2).

MARK RUBIN. Graduate of Lee H. Edwards High School, 1938; French Club (2); International Relations Club (1, 2); Bowling Team (1, 2); Basketball Team (2).

HENRY B. SINCLAIR. Graduate of Flat Rock High School, 1937; Glee Club (2); Basketball Team (2).

HENNY SPAANBROEK. Graduate of Lee H. Edwards High School, 1937; Freshman Marshall; Laboratory Assistant (2); Sophomore Dance Committee (2); Summit Staff (2).

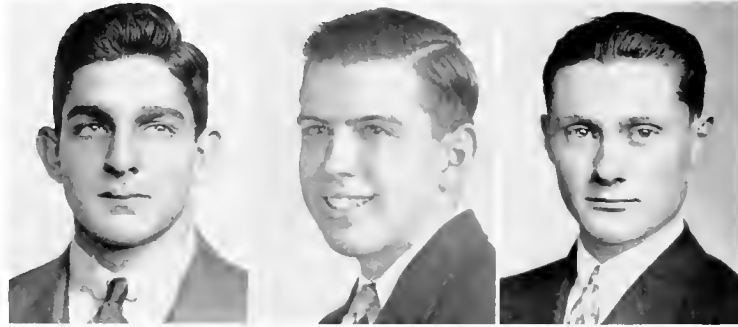
JOHN E. THAYER, JR. Graduate of Lee H. Edwards High School, 1938; Bluets Staff (2); Editor of Bluets (2); French Club (2).

LOUIS VAN DYCK. Graduate of Lee H. Edwards High School, 1938; Bowling Team (2); State Dramatic Contest (1); International Relations Club (1); Chairman Sophomore Dance Committee (2); "Showoff."

EARL WEST. Graduate of Lee H. Edwards High School, 1938.

JACQUELINE YARROW. Graduate of Lee H. Edwards High School, 1938; Glee Club (1, 2); International Relations Club (1, 2); President of International Relations Club (2); Dramatic Club (1, 2); President of French Club (2); Assistant Editor Bluets (2); Summit Staff (2).





GEORGE DURNER. Graduate of Lee H. Edwards High School, 1937; Basketball Team (2, 3); Softball Team (1, 2, 3); Glee Club (3); Secretary of Class (3); Bridge Club (3); Bowling Team (3).

ELCON RICHARD KAPLAN. Graduate of Grace High School, 1938; International Relations Club (1, 2); Eljets Staff (1, 2); Assistant Editor Bluets (1, 2); Summer Staff (2); Dramatic Club (2); Bridge Club (1).

MARK SMITH, JR. Graduate of Haw Creek High School, 1938; Glee Club (2); Basketball Team (2).

Sophomores with No Pictures

THOMAS N. BLAKE. Graduate of Darlington School, Rome, Ga.; Transferred from Auburn University, 1940; Basketball (2).

WILLIAM BROOKS. Graduate of Lee H. Edwards High School, 1938.

JAMES DENNY. Graduate of Black Mountain High School, 1937.

MARCELLUS GARNER. Graduate of Lee H. Edwards High School, 1937.

DICK GROSS. Graduate of Lee H. Edwards High School, 1938; Bowling (2); Tennis (2).

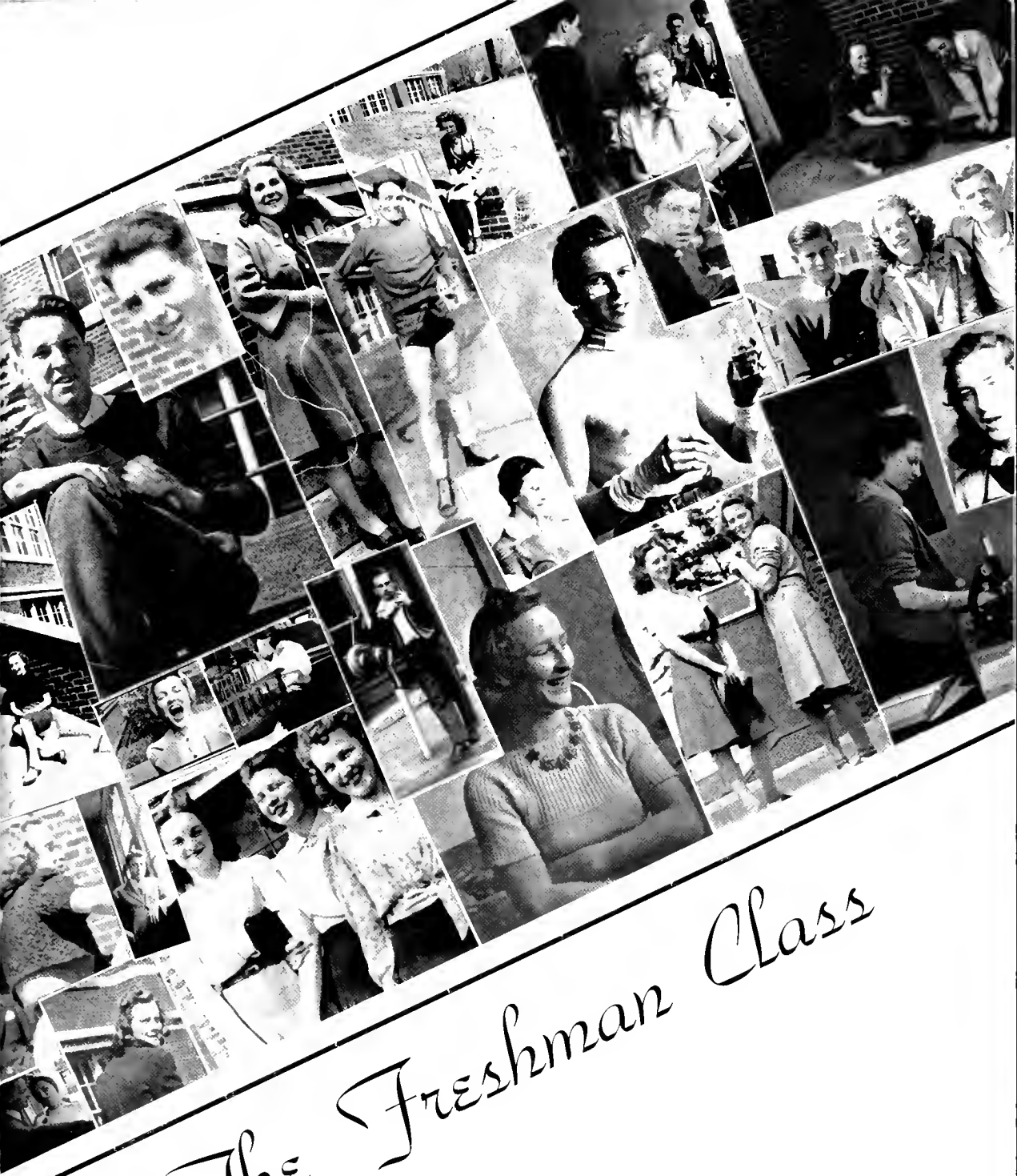
JAMES F. VAN VALKENBURGH. Graduate of Lee H. Edwards High School, 1937; Transferred from Georgia School of Technology, 1939.

HARRY BUCKNER. Graduate of West Buncombe High School, 1934.

Special Students

DALE BOGGY
 TARVER DAVIDSON
 MELVIN ELIAS
 WARD McINTOSH
 EILEEN SMITH
 ELLIS SUMNER





The Freshman Class



Freshman Class Officers

DAN EBBS
President

MARTIN WEST
(not in picture)
Vice-President

WILLIAM TISDALE
Secretary, Treasurer



Biltmore College Freshmen

- | | | | |
|---|---|--|--|
| <p>DEAN ALLISON
Fairview High School</p> | <p>MARY ELIZABETH BENNETT
Lee H. Edwards High School</p> | <p>EVELYN CHAMBERS
Lee H. Edwards High School</p> | <p>ROBERT F. DRUITT
Scott High School, Toledo, O.</p> |
| <p>MARY BERNICE ALLISON
Dorland - Bell High School,
Hot Springs, N. C.</p> | <p>RICHARD BENNETT
Lee H. Edwards High School</p> | <p>FORREST CHARNOCK
Lee H. Edwards High School</p> | <p>FRED ALLEN DUCKETT
Swannanoa High School</p> |
| <p>LA VERNE BALLARD
Lee H. Edwards High School</p> | <p>B. F. BLANKENSHIP
Sand Hill High School</p> | <p>IDA MABEL CHERRY
Lee H. Edwards High School</p> | <p>DANIEL VOORHESE EBBS
Lee H. Edwards High School</p> |
| <p>C. B. BARBRE, JR.
Goldsboro, N. C., High
School</p> | <p>MARY BOHANNON
Lee H. Edwards High School</p> | <p>ALMA LUCILLE COFFEY
Lee H. Edwards High School</p> | <p>MARGARET ROSE ENSLEY
Lee H. Edwards High School</p> |
| <p>RUTH BARTON
Oakley High School</p> | <p>ANNE KERR BROWN
Lee H. Edwards High School</p> | <p>J. IKE COOK, JR.
Asheville Farm School</p> | <p>DALES YOUNG FOSTER
Lee H. Edwards High School</p> |
| <p>MARY WIER BEAKLEY
Lee H. Edwards High School</p> | <p>HAMILTON BRYSON
Lee H. Edwards High School</p> | <p>MAY JO DE NARDO
St. Genevieve of the Pines</p> | <p>MARSHALL GRAVATT, JR.
Lee H. Edwards High School</p> |



Biltmore College Freshmen

VINITA GREER
Lee H. Edwards High School

LINDA LEA GROVES
Lee H. Edwards High School

MARY HANCOCK
Lee H. Edwards High School

AILEEN B. HARRIS
Oakley High School

ERMINE HENDERSON
Lee H. Edwards High School

JACK V. HENDRICKS
Lee H. Edwards High School

WILLIAM J. HOBBS
Lee H. Edwards High School

SARAH ELIZABETH ISRAEL
Valley Springs High School

JOHN H. JONES
Lee H. Edwards High School

REBECCA KEEVER
Lee H. Edwards High School

BARBARA F. LANGNER
Convent of Mary Immaculate,
Key West, Florida

REID LOWE
Lee H. Edwards High School

JOHN MASCARI
Grace High School

EDITH EARLE MOFFAT
Convent of Mary Immaculate,
Key West, Florida

JAMES LEWIS MOODY
Lee H. Edwards High School

EDNA MOORE
Lee H. Edwards High School

JACK MORGAN
Lee H. Edwards High School

JULIA ELIZABETH MORGAN
Lee H. Edwards High School

BARBARA M. MORRIS
Lee H. Edwards High School

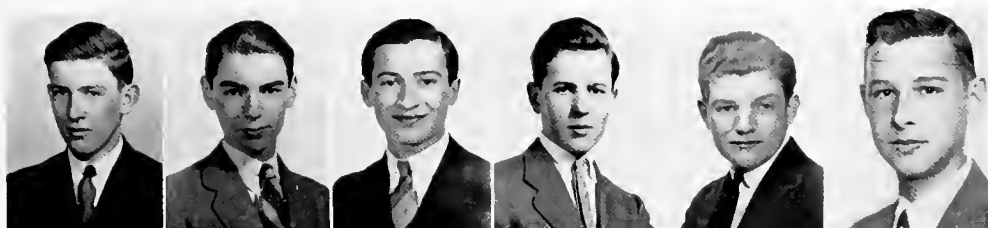
MARION EUGENIA MORRIS
Lee H. Edwards High School

MARK LEWIS NAIMAN
Lee H. Edwards High School

JUNE L. PARKS
Lee H. Edwards High School

GROVER PENLEY
Woodfin High School

DOROTHY LOUISE RAMSAY
Louisville Academy, Louis-
ville, Georgia



Biltmore College Freshmen

JOHN F. RHODES, JR.
Lee H. Edwards High School

EMANUEL H. ROBINSON
Lee H. Edwards High School

ROBERT R. ROSEN
Lee H. Edwards High School

JOHNNIE RYMAN
Christ School

ALAN H. SHAW
Christ School

ROBERT R. SHOPE
Haw Creek High School

KATHERINE SMITH
Biltmore High School

MARGARET THOMPSON
Biltmore High School

WILLIAM TROTTER
Lee H. Edwards High School

MARTIN WEST, JR.
Lee H. Edwards High School

RICHARD H. ZIMMERMAN, JR.
Lee H. Edwards High School

Freshmen with No Pictures

BILL ADAMS
VERNON AIKEN
HARRY BOOK
KATHERINE CARSON
CARROLL CHERRY
MARION CLEMENTS
PHILIP HAMILTON
JOEL HENRY

DEAN JAMISON
HAROLD KENT
GERARD MARDER
FRANK MORRIS
NICK POSEY
HARVEY SCHERR
WILLIAM TISDALE
BILL WESSON



Joe College - Betty Co-Ed



Best All 'Round



Most Original



Most Personality - Best Dressed



Most Likely To Succeed



Most Dignified & Most Sophisticated



Most Athletic

Superlatives



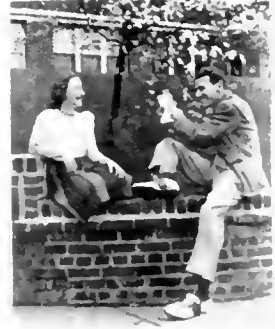
Most Dependable



Most Attractive



Most Friendly



Most Popular



Activities



*"Praise not thy work, but let thy work praise thee.
For deeds, not words, make each man's memory stable.
If what thou dost is good, its good all men will see.
Mush by its smell is known, not by its label."*

— Saadi

CO-EDITORS

Wilma Kyles and Sadie June Love

BUSINESS MANAGER

Harold Keith

PHOTOGRAPHIC EDITOR

Dixon Richardson

Helen Cole
Jacqueline Yarrow
Dick Kaplan
Edith Moffat
Emanuel Robinson
Aylett Griffin

Julia Morgan
John Jones
Marcellus Garner
Henny Spaanbroek
Blackburn Gross
Linda Lea Groves

The Summit Staff





Bluets Staff

1940		1939
John Thayer	EDITOR	Dixon Richardson
Jacqueline Yarrow Dick Kaplan Dixon Richardson Richard Bennett Edith Moffat Fred Duckett	ASSISTANT EDITORS	Sadie June Love Jacqueline Yarrow Dick Kaplan Bob Druitt
Fred Duckett	BUSINESS MANAGER	John Thayer
Grover Penley Dixon Richardson	BUSINESS STAFF	Jacqueline Yarrow Fred Duckett
Bill Beakley	ART EDITOR	Bill Trotter



International Relations Club

Officers

President.....	Jacqueline Yarrow
Vice-President.....	Sadie June Love
Secretary-Treasurer.....	Dixon Richardson
Faculty Advisor.....	Mr. J. J. Stevenson, Jr.

Members

Pauline Baldwin
 Ervin Ball
 Bill Beakley
 Juanita Bell
 Alma Lee Cathey
 Helen Cole
 Dorothy Davenport

Neal Evans
 Marshall Gravatt
 Aylett Griffin
 Dick Kaplan
 Maunne Lady
 Barbara Langner
 Edith Moffat

Barbara Morris
 Mark Naiman
 Frances Nelson
 Robert Rosen
 Bill Trotter
 Earl West



Glee Club

Officers

Director.....Frank Gough
 Secretary-Treasurer.....Alma Coffey
 Accompanist.....May Jo DeNardo
 Faculty Advisor.....Frank Gough

Members

La Verne Ballard	May Jo DeNardo	Reid Lowe
Alma Coffey	Barbara Morris	Grover Penley
Mary Bennett	Katherine Carson	Henry Sinclair
Helen Cole	Ben Blankenship	William Trotter
Dorothy Davenport	William Brooks	Richard Zimmerman
Margaret Ensley	Fred Duckett	Richard Bennett
Vinita Greer	George Durner	Mark Smith
Linda Lea Groves	Jack Hendricks	Forrest Charnock



The Biltmore Players

Dramatic Club Officers

President.....
 Vice-President.....
 Business Manager.....
 Faculty Advisor.....

Eileen Smith
 Dan Ebbs
 Neal Evans
 Mrs. Ellen D. Callahan

Members

LaVerne Ballard
 Bill Beakley
 Mary Elizabeth Bennett
 Ben Blankenship
 Margaret Ensley
 Mary Hancock

Reid Lowe
 Nick Posey
 Margaret Thompson
 William Trotter
 Jacqueline Yarrow
 Vinita Greer

Richard Zimmerman
 Barbara Langner
 Edith Moffat
 Dixon Richardson
 Jimmy Cook
 Marcellus Garner
 Rebecca Keever

Antic Spring

Winner of the junior college production contest for one-act plays in the North Carolina Drama Festival.
Cast, left to right: Dan Ebbs, Barbara Langner, Vinita Greer, Harold Keith, Sadie June Love, and Richard Zimmerman.
Director: Mrs. Ellen Deppe Callahan.
Produced at Chapel Hill, April 2, 1940, by the Biltmore Players.
Second production at the Plaza Theatre, Asheville, April 25, 1940.

Tournament Plays

Honey Chile

Original one-act play by Eileen Smith. Winner of the North Carolina contest for original plays by junior college writers.
Cast, left to right: Mary Wier Beakley, Harold Keith, Dan Ebbs, Eileen Smith, Aylett Griffin, and Jack Hendricks.
Director: Mrs. Ellen Deppe Callahan.
Produced at Chapel Hill, April 3, 1940, by the Biltmore Players.
Second production at the Plaza Theatre, April 25, 1940.





Basketball Team

Student Manager.....Jimmy Moody

Coach.....Charles A. Nooney

Captains.....George Durner and Joe Duncan

MEMBERS

Dan Ebbs

Mark Rubin

Richard Bennett

Dales Foster

Joe Duncan

David Pool

George Durner

Tom Blake

WISHING BILTMORE COLLEGE
CONTINUED SUCCESS

IVEY'S

"One of the Carolinas' Predominating Stores"

For Pure Refreshment

Drink

The Coca-Cola logo is written in its classic, flowing script font.

In Bottles

ASHEVILLE - NORTH CAROLINA

Compliments of

**Morris-Austin
Co.**

EVERYTHING IN BUILDING
ELECTRICAL

—: PHONES :—

Office 824
Office 825

Electrical 296
Yard 1828



COMPLIMENTS OF
THE ASHEVILLE
ARMY STORE

It has been a pleasure to
work with the Staff in pro-
ducing this 1940 SUMMIT.

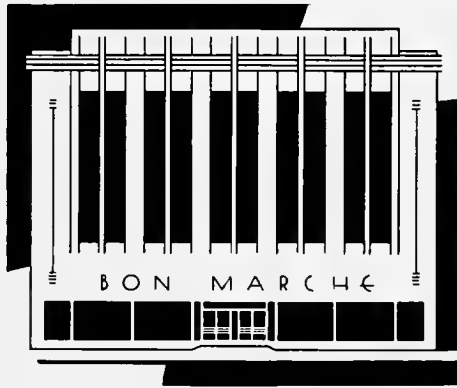
The Miller Printing Co.
Citizen Engraving Co.

Compliments of

SEARS ROEBUCK & CO.

48 HAYWOOD ST.

ASHEVILLE, N. C.



BON MARCHE, INC.

Asheville Born — Asheville Owned — Asheville Managed

1889 —:— 1940

Compliments of

S. H. KRESS & CO.

ASHEVILLE'S 5-10-25c STORE

Compliments of

Mountain City Laundry

&

**Abbott-Knight Dry
Cleaning**

ALWAYS WISHING BILTMORE
COLLEGE SUCCESS

Galyean's Grocery

558 BILTMORE AVE.

PHONE 1950

INSIST ON - - -



Policed For Freshness

Compliments of



The Photographs in This Annual
Were Made By

Preston Studio

46 HAYWOOD STREET

Over Sears Roebuck

ASHEVILLE - NORTH CAROLINA

MASTER SHOE DYERS

Gardner's Shoe Hospital

Leaders in Shoe Repairing

TELEPHONE 4537

72 COLLEGE ST. ASHEVILLE, N. C.

MEET YOUR FRIENDS
AT

Vick's

for

SANDWICHES AND DRINKS

Open All Night

Compliments of

Robinson Flower Shop

PHONE 1622

5 PAGE AVE. ASHEVILLE, N. C.

You don't have to go to college to know
that

FIELD'S

are

ASHEVILLE'S GREATEST
CLOTHES VALUES!



CECIL'S BUSINESS COLLEGE

Train for business -- the richest field in the world. Opportunity for employment never greater than preparation. A business course is the safest, sanest and quickest way to a successful career. Send for catalog.

Address CECIL'S, Asheville, N. C., or Spartanburg, S. C.

C. C. MULLINAX

GROCERIES AND FRESH MEATS
VEGETABLES AND FRUITS

"The One-Stop Food Store"
Selling Fine Foods Since 1911

TELEPHONES: 81-155 FREE DELIVERY
70 CHARLOTTE ST. ASHEVILLE, N. C.

Compliments of

GROVE PARK PHARMACY

250 Charlotte St.

PHONE 15

Motorcycle Delivery

SCHRAFFT'S

"The Nation's Leading Candy"

School Supplies and Materials

MORGAN BROS., INC.

Wholesale Distributors

67 BROADWAY ASHEVILLE, N. C.

Compliments of

Edwin Burge

"YOUR SHOE MAN"

7 HAYWOOD ST.

Montgomery Ward

"The Nation's Buying Habit"

The MAN Store

22 PATTON AVE.

*"Everything That's Good
In Good Clothes"*

WACHTEL'S, INC.

HOSPITAL. PHYSICIAN AND
SICK ROOM SUPPLIES

65 HAYWOOD ST. ASHEVILLE, N. C.

Compliments of

FINKELSTEIN'S

7 S. W. PACK SQUARE

ASHEVILLE - - NORTH CAROLINA

HILL'S MARKET

SELECT MEATS, POULTRY AND
GAME IN SEASON

"The House of Quality and Service"

TELEPHONES: 5461 - 5462

129 COLLEGE ST. ASHEVILLE, N. C.

Compliments of

TINGLE'S CAFE

*"The Little Cafe With
Big Eats"*

Compliments of

ASHEVILLE NEHI BOTTLING CO.

Manufacturers of
R C COLA — PAR-T-PAK
NEHI FLAVORS

Compliments of

CHARLES
STORES COMPANY INC.

11 PATTON AVE.

COVINGTON SPORT SHOP

*"Everything For The Discriminating
Sportsman"*

PHONE 5017

61 HAYWOOD ST. ASHEVILLE, N. C.

